

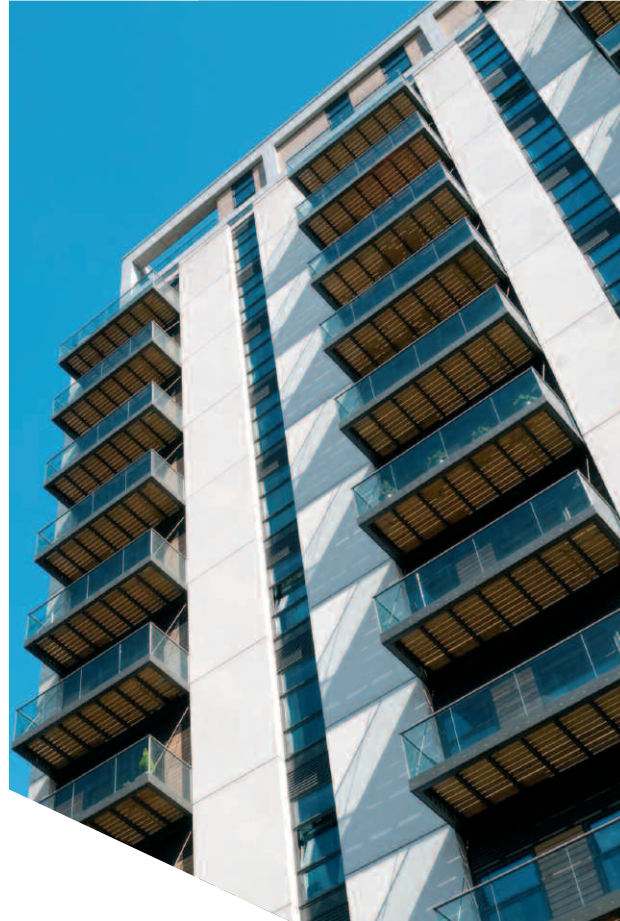
+ Creative engineering:

Developer &
private housing

Developer & private housing

We have established an enviable track record in the housing sector which enables us to offer you the engineering expertise that provides the innovative and sustainable solutions you need.

- Whether it's a private individual's project or a developer busy with hundreds or even thousands of properties, our focus is always to deliver a high-quality service that contributes to quality housing
- Our R&D team is constantly exploring other modern methods of construction for volume housing beyond those more commonplace in recent years
- Our teams include engineers who provide pre-planning information such as transport statements, travel plans and flood risk assessments





- Our team includes people who have been part of major building and developers in house capability
- Our civil engineers use 3D ground modelling, highway and drainage analysis techniques to develop highly efficient, optimised designs, all in accordance with adoptable highway and sewer standards
- Our structural engineers have proven expertise in providing economic foundation and superstructure solutions
- Our sustainability credentials have made us market-leading civil and structural engineers
- Our BREEAM and Code for Sustainable Homes assessors are qualified to undertake standard assessment procedures and National Home Energy Rating assessments

Our extensive track record in the Developer & Private Housing sector has seen us:

- provide advice on site feasibility and development through to providing alternative foundation and drainage options

- work with private individuals, large housing developers and local authorities throughout the UK on small domestic builds to major new build developments
- become one of only a handful of consulting civil and structural engineers who are accredited on The Green Register of Construction Professionals
- create a team which includes qualified Code for Sustainable Homes assessors

We offer the following with a high level of expertise:

- Structural engineering and civil engineering
- Adoptable highway and sewer agreements for example S278,S38, S104, S106
- Sustainable design
- Pre-planning and pre-acquisition
- Flood risk assessments
- Transport planning
- Code for Sustainable Homes assessments
- BREEAM assessments
- Energy assessments